

LM

feel the
difference

LMArte by STYLEITALIANO



Aesthetic layering – Succeed with LM-Arte

- LM-Arte is a set of innovative instruments for aesthetic restorations.
- Instruments have been developed in co-operation with Style Italiano, a group of dentists specialized in aesthetic dentistry.
- LM-Arte instruments are especially designed for composite layering.
- Each LM-Arte instrument is colour-coded and named by its main function which enables easy, efficient and quick restorative treatments.



LM

feel the
difference

LINEA 100 / 1000
by STYLEITALIANO

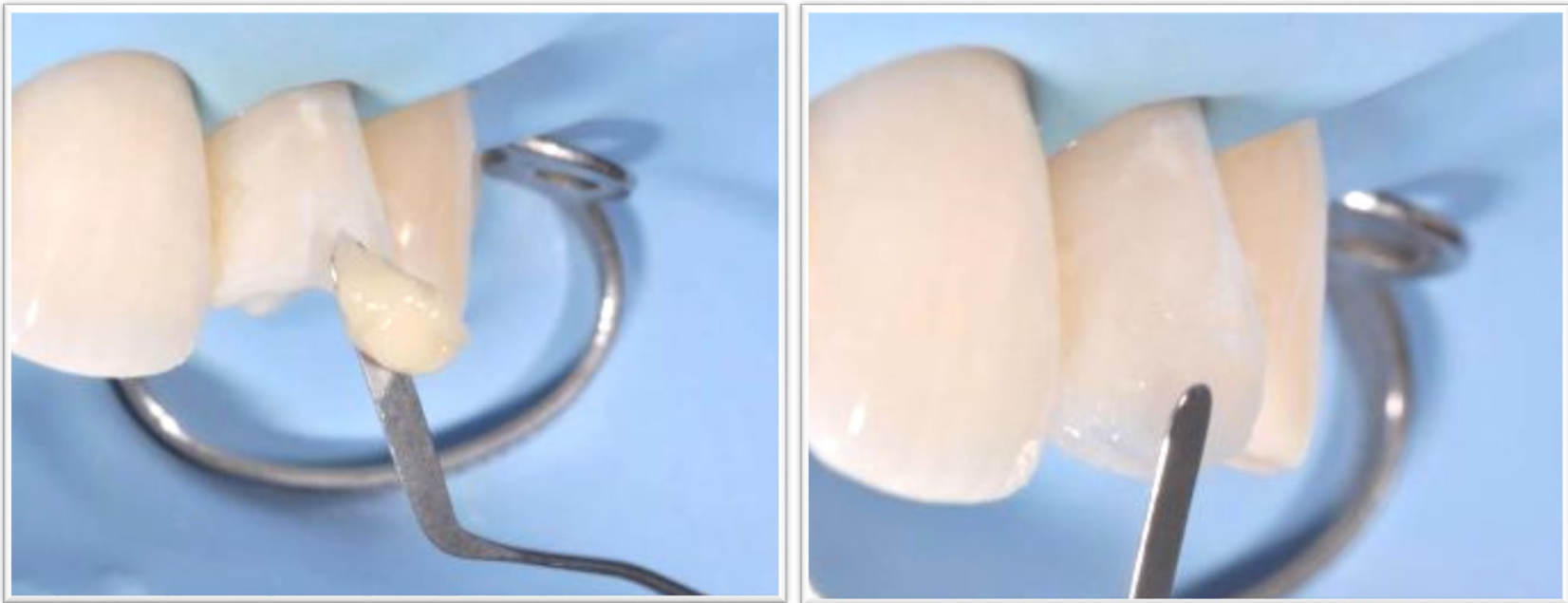
A very thin and flexible spatula
is designed for transporting and
aesthetic modeling the composite.

LM-Arte Applica – Apply elastically



- A very thin and flexible spatula is designed for transporting and aesthetic modeling the composite.

LM-Arte Applica – Apply elastically



- The flexible working end sculpts gently and precisely composite layers imitating the natural shapes of the tooth.

LM-Arte Applica – Apply elastically



- The thin tip of the LM-Arte Applica enables the modeling in narrow spaces or against the matrix band.

LM

feel the
difference

by STYLEITALIANO

Especially fine,
flexible and narrow spatula
for composite modeling.

LM-Arte Applica Twist – Apply with a twist



- Especially fine, flexible and narrow spatula for composite modeling.

LM-Arte Applica Twist – Apply with a twist



- Thin and narrow spatula as the LM-Arte Applica, its bended angles allow to reach even more difficult areas without twisting so much the hand, as modeling approximal walls or the marginal ridge in matrix.

The logo consists of the letters 'LM' in a white, bold, sans-serif font, centered within a dark blue square.

feel the
difference

A close-up, diagonal view of a light-colored, textured handle, likely for a spatula. The handle has a ribbed pattern and a circular detail near the end. The text 'LM Arte Modella by STYLEITALIANO' is printed on it in a bold, black, sans-serif font.

**LM Arte Modella
by STYLEITALIANO**

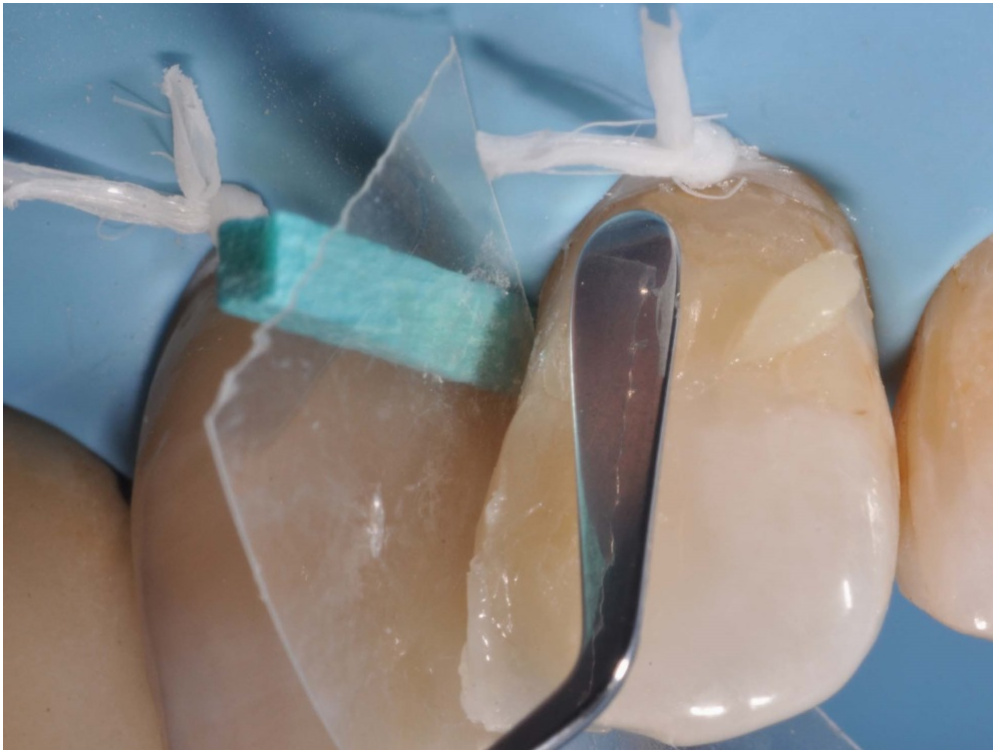
Especially fine
and wide spatula
for composite modeling.

LM-Arte Modella – Model flexibly



- Especially fine and wide spatula for composite modeling
- The wide blade allows to flatten surface efficiently.
- The thin tip makes the spatula very sharp and precise

LM-Arte Modella – Model flexibly



- Suits especially for the large tooth surfaces such as buccal surfaces of the incisors.

LM

feel the
difference



LMArte Condensa
by **STYLEITALIANO**

A long and round plugger
especially designed
for modeling composite.

LM-Arte Condensa – Push softly



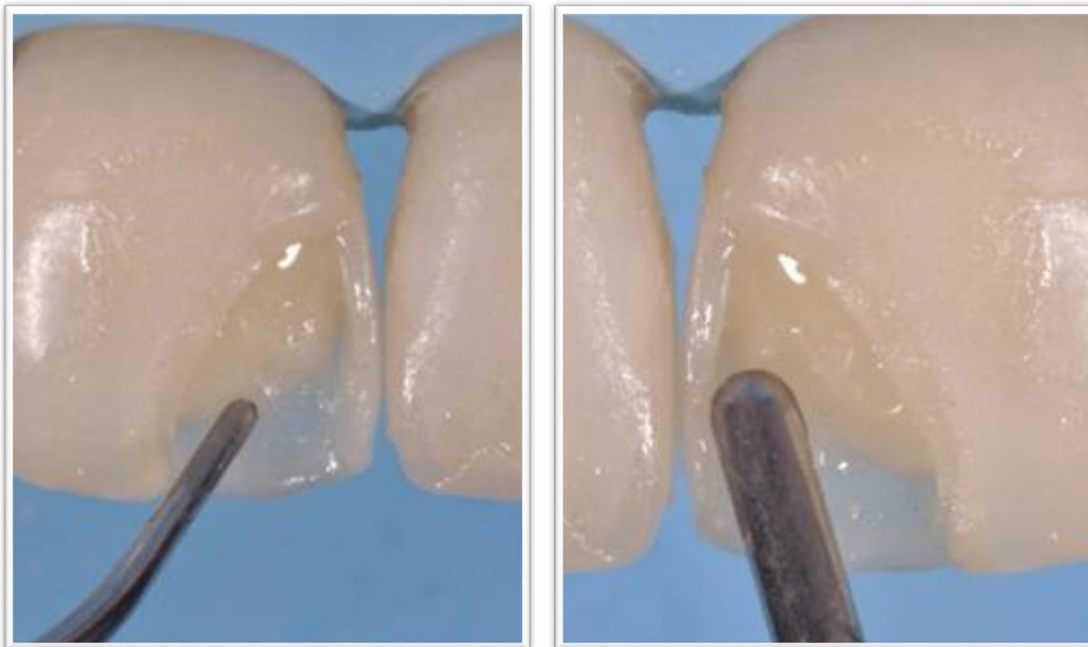
- A long and round plugger especially designed for modeling composite.

LM-Arte Condensa – Push softly



- The angulated shanks of the instrument enable unlimited access to all cavities.
- Condensa has both a thick tip and a thin tip which may be used in cavities of different sizes, in both anterior and posterior areas.

LM-Arte Condensa – Push softly



- The angulated shanks of the instrument enable unlimited access to all cavities.
- The rounded working end enables a delicate condensation of composite without any risk of sticking.

LM

feel the
difference



LM Arte Fissura
by **STYLEITALIANO**

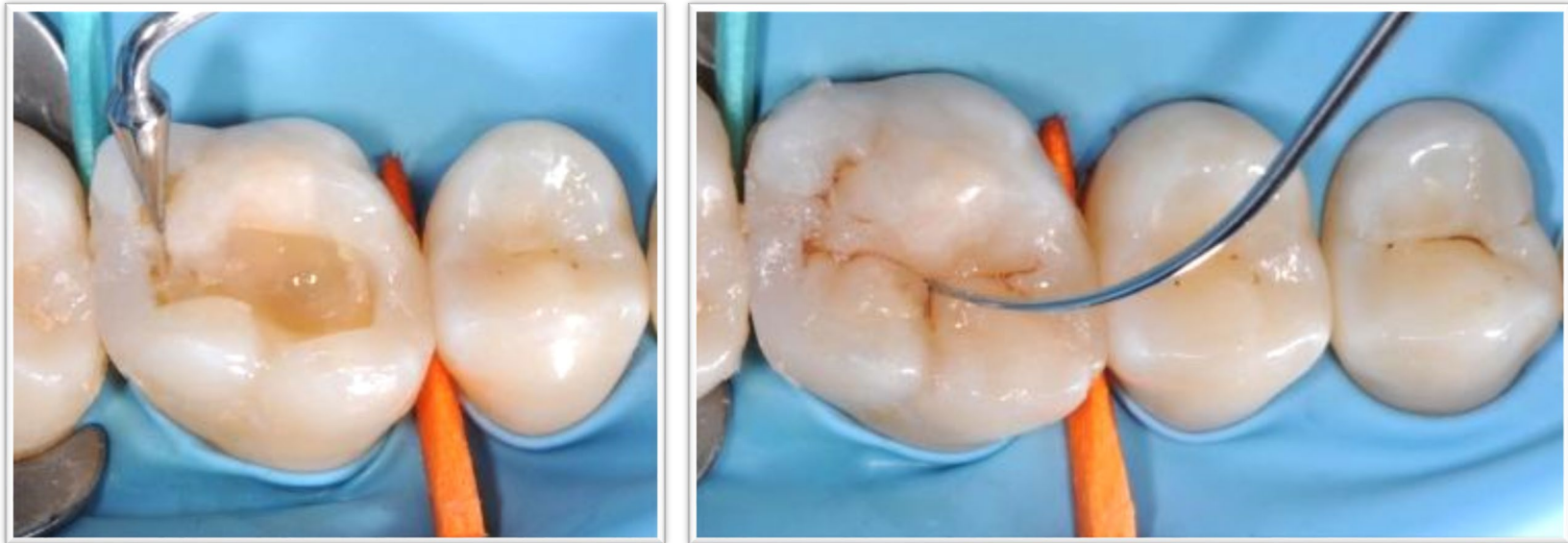
A modeling instrument
with extremely sharp pointed tips.

LM-Arte Fissura – Sculpt delicately



- A modeling instrument with extremely sharp pointed tips.

LM-Arte Fissura – Sculpt delicately



- The conical tip is perfect for sculpting the anatomy of occlusal area of the posterior teeth.
- The flexibility of the LM-Arte Fissura enables the gentle probing possible excess bonding resins on the tooth surfaces.

LM-Arte Fissura – Sculpt delicately



- The fine, probe shaped tip is optimal for modeling fissures and mamelons as well as for layering characterization composites and sealants.

The logo consists of the letters 'LM' in a white, bold, sans-serif font, centered within a dark blue square.

feel the
difference

A close-up, black and white photograph of a dental measuring instrument. The instrument is a long, thin, cylindrical rod with a textured grip at the top and a measurement scale at the bottom. The text 'LM Arte Misura by STYLEITALIANO' is printed on the side of the rod. The background is a plain, light color.

LM Arte Misura
by STYLEITALIANO

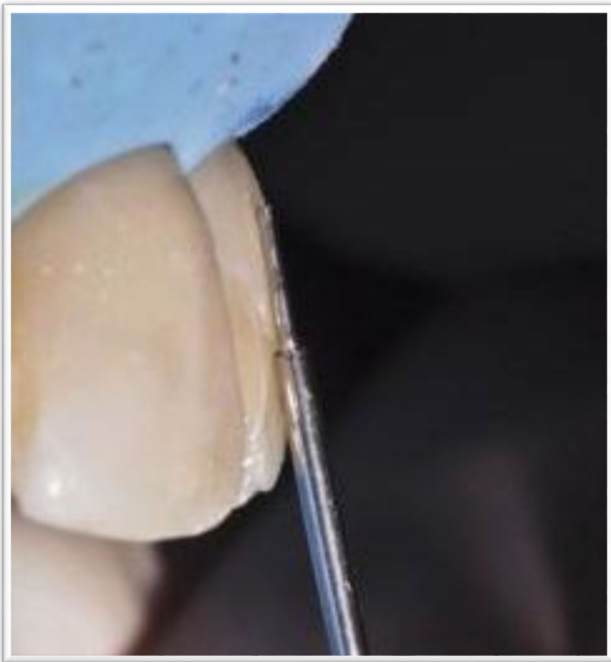
A unique instrument
for horizontal and vertical measuring
of thicknesses of composite layers
on the anterior restorations.

LM-Arte Misura – Measure precisely



- A unique instrument for horizontal and vertical measuring of thicknesses of composite layers on the anterior restorations.

LM-Arte Misura – Measure precisely



- After the layering but before the polymerization of the dentine composite, the thinner, conical shaped tip is placed on the natural tooth enamel.
- This way the unpolymerized composite remaining under the conical tip will be gently modeled, leaving an optimal space for enamel composite layer.

LM-Arte Misura – Measure precisely



- The thicker, short tip of the LM-Arte Misura is placed horizontally on the margin of the prepared cavity so that the edge of the tip remains on the original enamel. This determines the right amount of transparent composite to apply on the finishing line.
- As a result, the final aesthetic restoration consists of correctly calibrated opaque and translucent composites, preventing the unpleasant grey effect of the composites

The logo consists of the letters 'LM' in a white, bold, sans-serif font, centered within a dark blue square.

feel the
difference

A close-up, angled view of a dental instrument handle. The handle is light-colored with a textured, ribbed surface. The text 'LMArte Eccesso by STYLEITALIANO' is printed in black on the handle. The instrument's tip is visible on the left side of the frame.

LMArte Eccesso
by **STYLEITALIANO**

An instrument designed
for the removal of
composite and bonding residue.

LM-Arte Eccesso – Finish neatly



- An instrument designed for the removal of composite and bonding residue.

LM-Arte Eccesso – Finish neatly



- The special angulated working ends of the LM-Arte Eccesso are ideal for excess removal from cervical anterior and interproximal molar areas.
- This fine but solid instrument is characterized by an optimized length, thickness and width of the blade.

LM

feel the
difference



**LMArte Posterior Misura
by STYLEITALIANO**

Designed for
horizontal and vertical measuring
of final composite filling layer
in direct posterior restorations.

LM-Arte Posterior Misura – Measure and Model



- Designed for horizontal and vertical measuring of final composite filling layer in direct posterior restorations.

LM-Arte Posterior Misura – Measure and Model



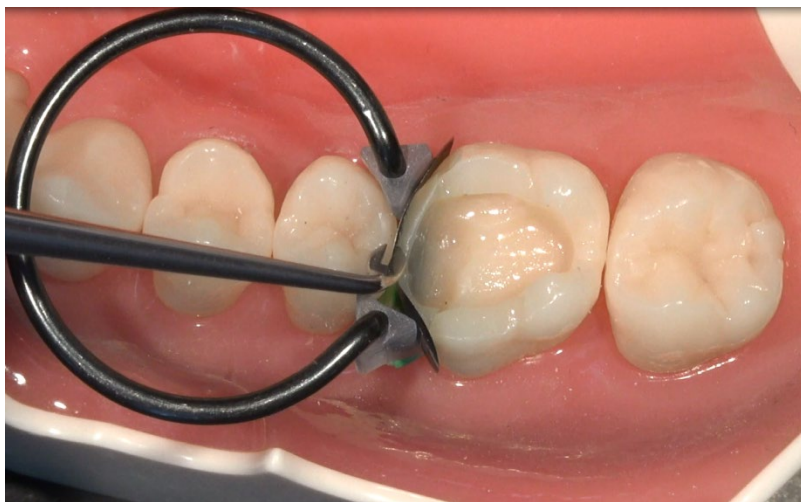
- The fork shaped tip of the instrument allows modelling of the approximal wall with presence of a matrix.

LM-Arte Posterior Misura – Measure and Model

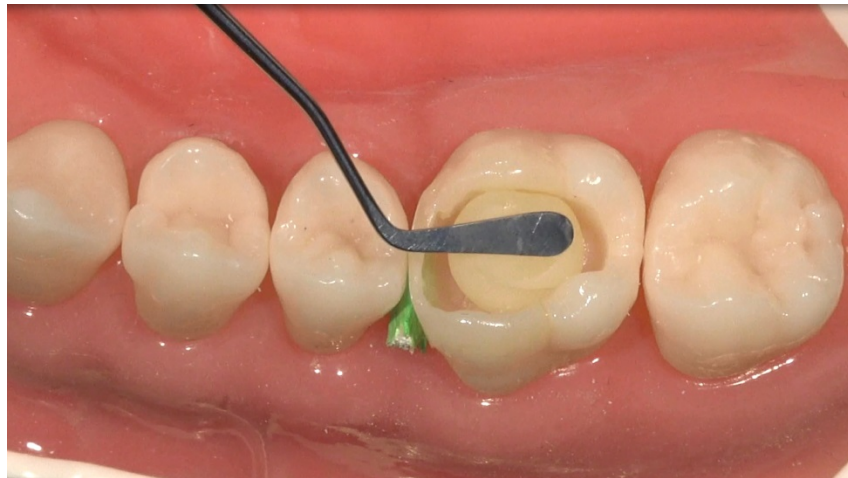


- The tip is placed horizontally on the margin of the prepared cavity so that the edge of the tip remains on the original enamel.
- This determines the right amount of transparent composite to apply on the finishing line, preventing the unpleasant grey effect of the composites.

LM-Arte Posterior Misura



LM-Arte Posterior Misura



LM-Arte Posterior Misura



Aesthetic layering – Succeed with LM-Arte

