

# schülke -+

## mikrozyd®

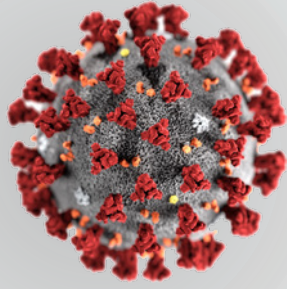
Surface disinfection against COVID-19,  
when compromise is not an option

Effective against  
coronaviruses  
including  
SARS-CoV-2



we protect lives  
worldwide

# SARS-CoV-2 is the virus that causes COVID-19



# Contaminated hands

SARS-CoV-2 can remain on human skin for around 9 hours

[Hirose, 2020]



# Transmission of SARS-CoV-2

Spreads between people, when an infected person coughs, sneezes or talks [WHO, 2020].



# Contaminated surfaces

SARS-CoV-2 found to be stable on:

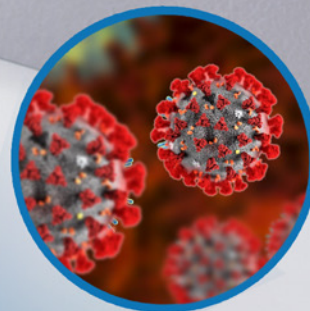
Plastic and stainless steel = up to 72 hours

Cardboard = up to 24 hours

Copper = up to 4 hours

[van Doremalen, 2020]

Human coronaviruses can remain infectious on inanimate surfaces at room temperature for up to 9 days [Kampf 2020]



'Respiratory secretions or droplets expelled by infected individuals can contaminate surfaces and objects, creating fomites (contaminated surfaces). Viable SARS-CoV-2 can be found on those surfaces for periods ranging from hours to days .....in particular at high concentration in health care facilities where COVID-19 patients were being treated.' [WHO, 2020]

# Cleaning without compromise

Public Health England recommends:

*'The frequency of cleaning across all risk pathways should be increased during the pandemic to at least twice daily. Frequently touched sites/points, in particular waiting rooms/dental chair, should be cleaned between patients. A....disinfectant effective against viruses, bacteria and fungi to EN standard 14476 for viricidal activity should be used.'* [PHE, 2021]

#### References

Hirose R et al, Survival of SARS-CoV-2 and influenza virus on the human skin: Importance of hand hygiene in COVID-19, Clinical Infectious Diseases, 2020.  
 Public Health England, COVID-19: infection prevention and control dental appendix, updated 21st January 2021  
 van Doremalen N, Bushmaker T, Morris DH, et al. Aerosol and surface stability of SARS-CoV-2 as compared with SARS-CoV-1. N Engl J Med. 2020 Apr 16;382(16):1564-7  
 Kampf G, Todt D, Pfaender S ,Steinmann E, Persistence of coronaviruses on inanimate surfaces and their inactivation with biocidal agents, Journal of Hospital Infection, VOL 104, ISSUE 3, P246-251, 2020  
 World Health Organization. Transmission of SARS-CoV-2: implications for infection prevention precautions – scientific brief. 2020 [internet publication] <https://www.who.int/news-room/commentaries/detail/transmission-of-sars-cov-2-implications-for-infection-prevention-precautions>

## Selecting the ideal disinfectant [Rutala, 2014]



#### References

Rutala WA, Weber DJ. Selection of the ideal disinfectant. Infect Control Hosp Epidemiol. 2014 Jul;35(7):855-65. doi: 10.1086/676877. Epub 2014 May 29. PMID: 24915214.

# mikrozid®



limited

**VIR** 30s

**BAC** 60s

**YEAST** 60s

**TB** 60s

Alcohol

# mikrozid® alcohol free



limited

**VIR** 60s

**BAC** 60s

**YEAST** 60s

**TB** -

Alcohol-free

## Material Compatibility

Rubber  
Plastics  
Metals

## Material Compatibility

Rubber  
Plastics  
Metals  
Leather  
Plexi-glass

# mikrozid® universal



limited

**VIR** 15s

**BAC** 60s

**YEAST** 60s

**TB** 5 mins

*mikrozid® products are virucidal against enveloped viruses including coronaviruses and SARS-CoV-2*

Low Alcohol

## Material Compatibility

Rubber  
Plastics  
Metals  
Leather  
Plexi-glass

Product Features		Ready To Use Wipes	
		mikrozid®	mikrozid® universal
<b>Composition</b>	<b>Active Ingredients</b>	100g agent solution contains: - 25 g Ethanol (94 %) - 35 g Propan-1-ol	100g agent solution contains: - 12.6 g Ethanol (94%) - 17.4 g Propan-2-ol - < 5% anionic surfactants
	<b>Contains alcohol?</b>	✓	✓
<b>Material Compatibility</b>	<b>Metals</b> (e.g. Stainless steel, copper, brass)*	✓	✓
	<b>Rubbers</b> (e.g. Natural rubber, silicone)*	✓	✓
	<b>Plastics</b> (e.g. PE, PET, PS, PC)*	✓	✓
	<b>Plexi-glass</b> (e.g. Acrylic)	✗	✓
	<b>Leather</b>	✗	✓
	<b>Bactericidal</b>	1 min	Clean condition: 1 min Dirty condition: 2 mins
	<b>Yeasticidal</b> (e.g. <i>Candida albicans</i> , <i>Candida auris</i> )	1 min	Clean condition: 1 min Dirty condition: 2 mins
<b>Antimicrobial Spectrum &amp; Contact Time*</b> Results for dirty conditions unless otherwise stated	<b>Fungicidal</b> (e.g. <i>Aspergillus</i> species)	clean: 2 mins	-
	<b>Mycobactericidal</b> (e.g. <i>Mycobacterium terrae</i> )	1 min	5 mins
	<b>Enveloped virus</b> (e.g. HIV, HBV, HCV, Coronavirus)	30 sec	15 sec
	<b>Non-enveloped virus</b> (Rotavirus)	n/a	15 sec
	<b>Non-enveloped virus</b> (Adenovirus)	30 sec	15 mins
<b>Surface Coverage</b>	<b>Non-enveloped virus</b> (Norovirus)	1 min	clean: 30 sec; dirty: 1 min
		0.5m <sup>2</sup> (Jumbo Tub)	1m <sup>2</sup> (Premium Pack) 0.5m <sup>2</sup> (Jumbo Tub)

Legend: ✓ - Yes, ✗ - No

\*For more information, please contact the relevant salesperson or email to [mail.uk@schuelke.com](mailto:uk@schuelke.com)

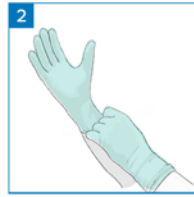
# How to use

## Storage recommendations for wipes

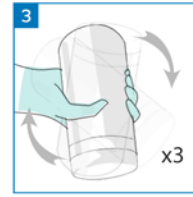
### Jumbo Tub



1 Wash hands thoroughly.



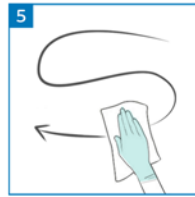
2 Put on gloves.



3 Invert the tub 3 times.



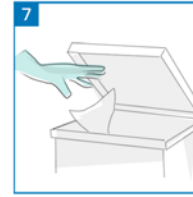
4 Open lid and pull out the wipes.



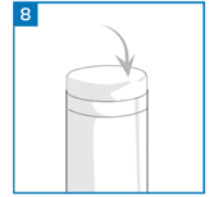
5 Wipe the surface with an "S" pattern.



6 Ensure complete wetting of the surface throughout the exposure time.

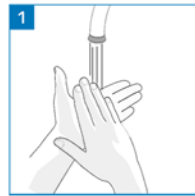


7 Dispose the used wipes.



8 Make sure that the lid is securely closed.

### Liquid



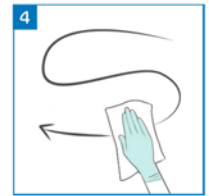
1 Wash hands thoroughly.



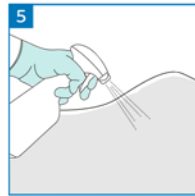
2 Put on gloves.



3 Spray liquid into wipe



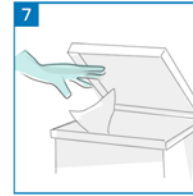
4 Wipe the surface with an "S" pattern.



5 Alternatively spray liquid directly on to uneven surfaces

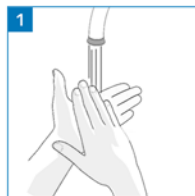


6 Ensure complete wetting of the surface throughout the exposure time.

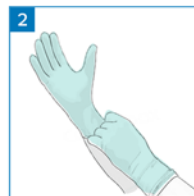


7 Dispose the used wipes.

### Premium Pack



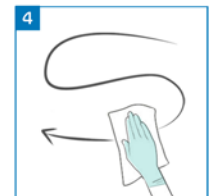
1 Wash hands thoroughly.



2 Put on gloves.



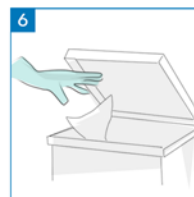
3 Open pack and pull out the wipes.



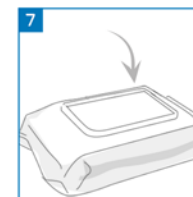
4 Wipe the surface with an "S" pattern.



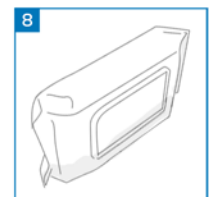
5 Ensure complete wetting of the surface throughout the exposure time.



6 Dispose the used wipes.



7 Make sure that the lid is securely closed.

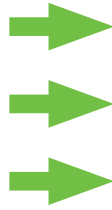


8 Make sure to store pack on its side

# Product Summary

## The plus of schülke – mikrozid® range ready-to-use wipes

- tested to EN 14476 standards = efficacy against enveloped viruses including coronaviruses.
- high quality non-woven material.
- certified to EN 16615 the highest level of testing for antimicrobial wipes.



- effective in high-risk and high-touch areas for COVID-19.
- tear-resistant and holds optimum disinfectant for effective cleaning.
- the test examines the efficacy of the wipe as a whole i.e. the wipe plus the disinfectant component.



### mikrozid®

Unique alcohol formulation for virucidal protection in the cleaning and disinfection of hard surfaces

- limited VIR 30s
- BAC 60s
- YEAST 60s
- TB 60s

- blend of two alcohols for a very high performance against viruses within one minute contact time
- cleaning and disinfection, two complete actions in one product
- added surfactants for boosted cleaning performance
- effective against bacteria (inc. TB), yeast and viruses (enveloped viruses inc. Coronaviruses, HBV, HIV, HCV)
- quick drying and residue free



Pack size	Article n°
200 jumbo wipes tub	109 214
200 jumbo wipes refill	7000 1450
150 wipes tub	109 216
150 wipes refill	70002065
1 L bottle	109210
5 L canister	109211



### mikrozid® alcohol free

Alcohol free, dual action cleaner and disinfectant for alcohol sensitive surfaces

- limited VIR 60s
- BAC 60s
- YEAST 60s
- TB -

- ideal for all surfaces including alcohol sensitive materials
- added surfactants for boosted cleaning performance
- cleaning and disinfection, two complete actions with one product
- effective against bacteria, yeast and viruses (enveloped viruses inc. Coronaviruses, HBV, HIV, HCV)
- rapid one minute contact time, making it ideal for use between patients



Pack size	Article n°
200 jumbo wipes tub	165 723
200 jumbo wipes refill	7000 1449
1 L bottle	165 720
5 L canister	165 721



### mikrozid® universal

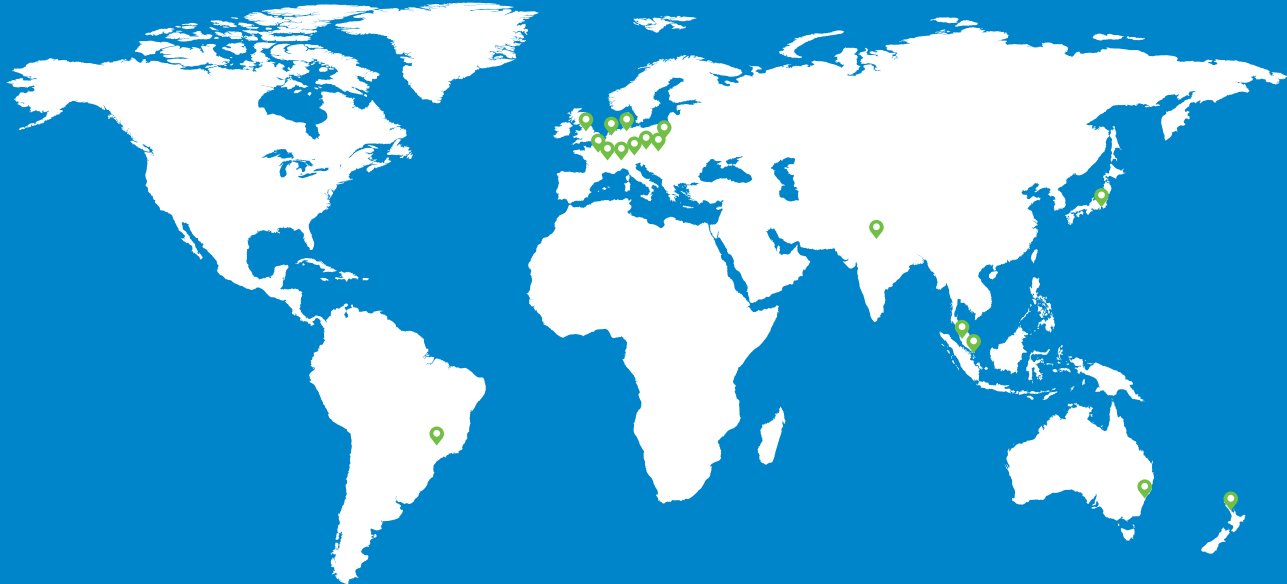
Uniquely versatile, low-alcohol formulation for the rapid cleaning and disinfection of surfaces & non-invasive medical devices

- limited VIR 15s
- BAC 60s
- YEAST 60s
- TB 5 mins

- unique low alcohol formulation - blend of two alcohols
- dual action - cleaning and disinfection with one product
- added surfactants for outstanding cleaning
- compatible with a wide range of materials including: leatherette, tablets and displays
- effective against bacteria (inc. TB), yeast and viruses (enveloped viruses inc. Coronaviruses, HBV, HIV, HCV)
- dermatologically tested



Pack size	Article n°
100 wipes	7000 0038
1 L liquid	7000 0998



## schulke worldwide:

### Australia

Schulke Australia Pty Ltd  
Macquarie Park NSW 2113  
Phone +61 2 8875 9300  
Fax +61 2 8875 9301

### Austria

Schülke & Mayr Ges.m.b.H.  
1070 Vienna  
Phone +43 1 523 25 01 0  
Fax +43 1 523 25 01 60

### Brazil

Vic Pharma Indústria e  
Comércio Ltda.  
Taquaratinga/SP – CEP  
15900-000  
Phone +16 3253 8100  
Fax +16 3253 8101

### Czech Republic

Schulke CZ, s.r.o.  
73581 Bohumín  
Phone +420 558 320 260  
Fax +420 558 320 261

### France

Schülke France SARL  
92250 La Garenne-  
Colombes  
Phone +33 1 42 91 42 42  
Fax +33 1 42 91 42 88

### India

Schulke India Pvt. Ltd.  
New Delhi 110044  
Phone +91 11 30796000  
Fax +91 11 42595051

### Japan

Schulke Japan LLC  
Shinagawa East One Tower  
2-16-1 Konan, Minato-ku,  
Tokyo 108-0075  
Phone +81 3 6894 3335  
Fax +81 3 3453 0207

### Malaysia

Schülke & Mayr (Asia) Sdn Bhd.  
47301 Petaling Jaya, Selangor  
Phone +60 3 78 85 80 20  
Fax +60 3 78 85 80 21

### Netherlands

Schülke & Mayr Benelux B.V.  
2031 CC Haarlem  
Phone +31 23 535 26 34  
Fax +31 23 536 79 70

### New Zealand

Schulke New Zealand Limited  
Auckland 1010  
Phone +61 2 8875 9300  
Fax +61 2 8875 9301

### Poland

Schulke Polska Sp. z o.o.  
02-305 Warszawa  
Phone +48 22 11 60 700  
Fax +48 22 11 60 701

### Singapore

Schulke & Mayr (Asia) Pte. Ltd.  
Singapore 159410  
Phone +65 62 57 23 88  
Fax +65 62 57 93 88

### Slovakia

Schulke SK, s.r.o.  
97101 Prievidza  
Phone +421 46 549 45 87  
Fax +420 558 320 261

### Switzerland

Schülke & Mayr AG  
8003 Zurich  
Phone +41 44 466 55 44  
Fax +41 44 466 55 33

### United Kingdom

Schulke & Mayr UK Ltd.  
Sheffield S9 1AT  
Phone +44 114 254 35 00  
Fax +44 114 254 35 01

... plus our international distributors

## schulke -+

Schülke & Mayr UK Ltd.  
Sheffield S9 1AT | United Kingdom  
Phone +44 114 254 35 00  
Fax +44 114 254 35 01  
[www.schuelke.com](http://www.schuelke.com)



[www.youtube.com/schuelkeChannel](http://www.youtube.com/schuelkeChannel)



[www.facebook.com/myschulke](http://www.facebook.com/myschulke)



[twitter.com/schulkeUK](http://twitter.com/schulkeUK)