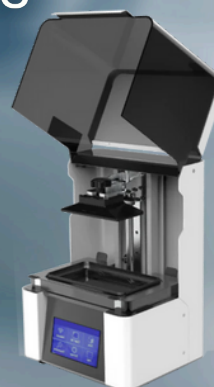




Digital Equipment Special Offers



Training & After Sales Support – You Can Rely On DMI

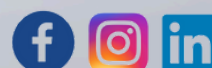
For more information contact

Vanja - (00353) 87 344 2307

Email: vanja@dmiequipment.ie

www.dmiequipment.ie

Prices are inclusive of VAT. Based on finance over 60 months. E&OE





Primescan Connect

Digital Impressions Scanner Portable Solution

- Connect scanning software
- CCC Inbox Licence
- Not upgradeable to chairside CEREC system

Intraoral scanning
without the whole
CEREC system

Supports digital workflows:

- Clinic-to-lab restorative workflow
- Clinic-to-lab implant workflow
- Clinic-to-partner orthodontic workflow
- Clinic-to-partner sleep apnoea workflow
- Patient monitoring

**From €450/£387 per month
Including laptop***



For more information contact

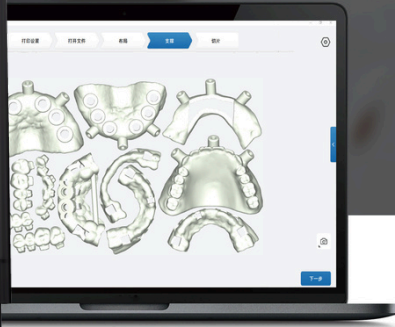
Vanja - (00353) 87 344 2307

Email: vanja@dmiequipment.ie

www.dmiequipment.ie

Prices are inclusive of VAT *Based on finance over 60 months. E&OE





AccuFab-CEL Dental 3D Printer



Higher, Faster, Easier.

The AccuFab-CEL has significantly improved its printing speed, especially in full-platform printing. With SHINING 3D's self-developed mainboard and high-performance light panel, the AccuFab-CEL offers a premium-level printing experience for users in the 3D printing field



From €123/£106 per month*



FabWash Washing Unit

Smarter Post-Processing

- A consistent, automated workflow
- Automated part-release
- Never think about wash time setting again



From €56/£48 per month*

For more information contact

Vanja - (00353) 87 344 2307

Email: vanja@dmiequipment.ie

www.dmiequipment.ie

Prices are inclusive of VAT *Based on finance over 60 months. E&OE



DENTIQ

Your Chairside 3D Printer



ACKURETTA



- Precalibrated 150+ resins
- Smaller footprint ideal for clinics
- 47µm pixels for smoother surfaces
- Auto-calibration of Z Axis
- Replace most parts in under 15 min
- Dental focused technical support
- Intuitive UI for quick
- Implementation
- 1-Year Warranty

vhf

E4

Chairside Milling Machine

The innovative milling machine.

- Innovative
- Fast & precise
- Independent
- Reliable
- Cost Effective



€2,576/£2,215

Limited Stock Available



From €417/£358 per month*

For more information contact

Vanja - (00353) 87 344 2307

Email: vanja@dmiequipment.ie

www.dmiequipment.ie



Prices are inclusive of VAT *Based on finance over 60 months. E&OE



CEREC Primemill

CEREC takes another step forward with CEREC Primemill, empowering dentists to provide and experience superior chairside dentistry.

CEREC Primemill utilizes state-of-the-art technology and CAM strategies to produce premium chairside restorations easier, faster, and more precisely. With a broad range of material options from Dentsply Sirona and other validated partners, the treatment of multiple indications is possible.



Short milling and grinding times

Mill CEREC Zirconia+ restorations in around five minutes to cut valuable process time. Fast grinding mode is available for glass and feldspar ceramics as well as hybrid/composite blocks



Broad range of indications

With CEREC Primemill you can choose materials from almost 50 validated partners and manufacture multiple indications including crowns, inlays, onlays, veneers, bridges, abutments and surgical guides.



Ease of integration

Integrate and delegate dental milling with ease thanks to user-friendly touch interface that guides you through every step of the workflow as well as through key maintenance procedures and other routine tasks.



High quality restorations

CEREC Primemill delivers outstanding restoration margins and surface details, so you can offer patients extremely precise, esthetic results. Extra Fine milling is available for an even higher level of detail with occlusal fissures and interdental areas on bridges.

Procedures & Indications for CEREC Primemill



Crowns



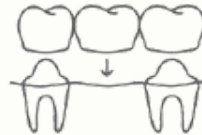
Veneers



Inlays



Onlays



Bridges



Abutment
Crowns



Surgical
Guides

From €1,128/£970 per month*

For more information contact

Vanja - (00353) 87 344 2307 Email: vanja@dmiequipment.ie www.dmiequipment.ie

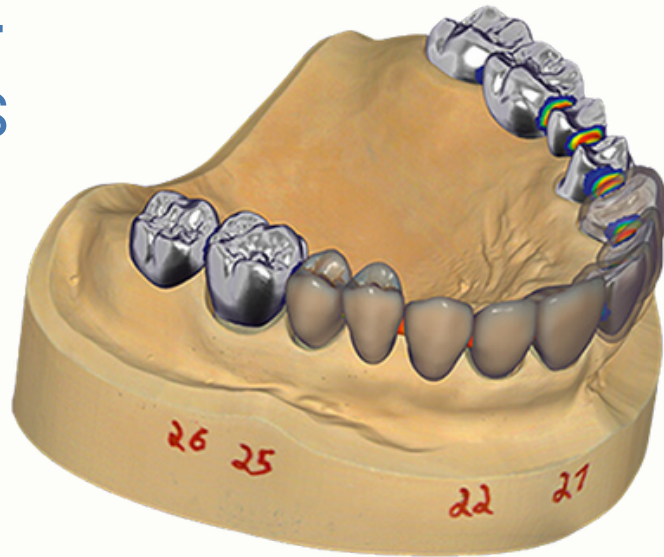
Prices are inclusive of VAT* Based on finance over 60 months. E&OE



CREATE SINGLE-VISIT RESTORATIONS WITH EASE



exocad



From €103/£89 per month*



Hightech tools for high precision artisans

exocad DentalCAD is the tool for every dental technician who wants to be part of the future in digital dentistry

Easy to learn

To digitally design a restoration has never been as easy and accessible - without the steep learning curve of the past. This will help you minimize training costs, and maximize productivity and profits



Easy to upgrade

Expand your exocad DentalCAD standard version according to your needs. exocad add-on modules enhance the feature-set of the standard version



exocad DentalCAD

The leading white-label dental CAD software: great for beginners, yet powerful in the hands of an expert.

For more information contact

Vanja - (00353) 87 344 2307

Email: vanja@dmiequipment.ie

www.dmiequipment.ie



Prices are inclusive of VAT *Based on finance over 60 months. E&OE



Aoralscan 3 Wireless

- Go Wireless
- Fast and Stable
- Long-lasting Battery Life
- Next-level Software Functions



From €351/£302 per month
including laptop*

MetiSmile

MetiSmile is the first face scanner developed and produced by SHINING 3D exclusively for dentistry. It can quickly capture the facial information to create 3D model and assist in clinical diagnosis with its advanced software.



From €172/£148 per month
including laptop*

For more information contact
Vanja - (00353) 87 344 2307

Email: vanja@dmie.ie

www.dmiequipment.ie

Prices are inclusive of VAT *Based on finance over 60 months. E&OE



3D PRINTING BUNDLE OFFER



SHINING 3D
DENTAL

Buy:

- Shining 3D Aoralscan 3 (includes laptop)
- Accufab L4D 3D printer
- Fabwash washing unit
- Fabcure 2 post curing unit



FabWash Washing Unit



AccuFab-L4D 3D Printer



FabCure 2 Post-curing Unit

All this from only €472/£406 per month*

For more information contact

Vanja - (00353) 87 344 2307

Email: vanja@dmiequipment.ie

www.dmiequipment.ie

Prices are inclusive of VAT *Based on finance over 60 months. E&OE

